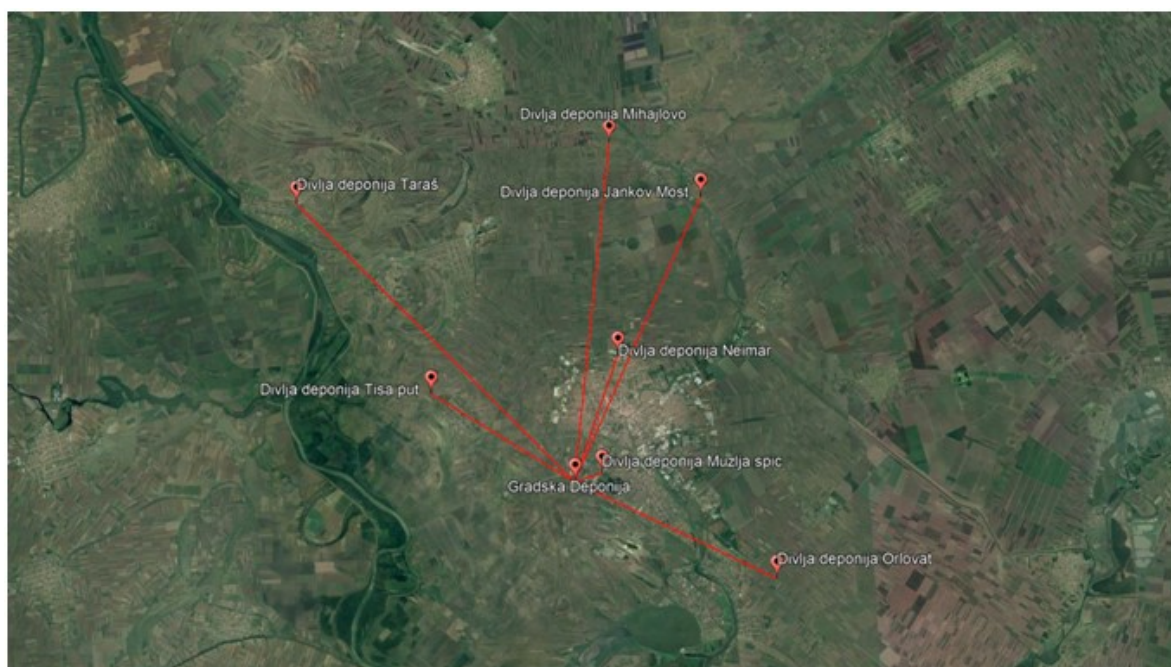


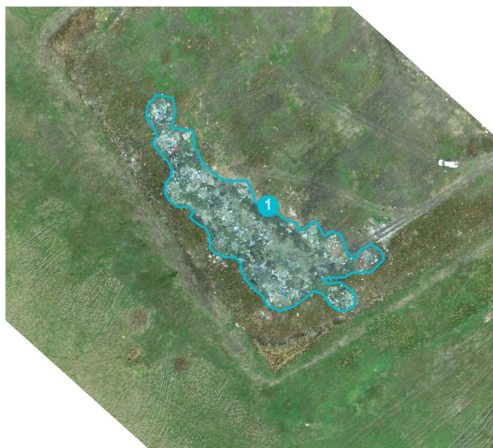
Locations to be remediated

No	Location	GPS Coordinates	Number of area	Surface area
1.	Mužlja špic	45°21'20.32"N 20°22'42.01"E	1	27 m2
			2	86 m2
2.	Neimar	45°24'7.78"N 20°23'25.02"E	1	534 m2
			2	184 m2
			3	77 m2
			4	29 m2
			5	79 m2
3.	Jankov Most	45°27'51.09"N 20°26'29.91"E	1	1370 m2
4.	Mihajlovo	45°29'15.20"N 20°23'26.87"E	1	539 m2
			2	1450 m2
			3	1750 m2
5.	Taraš	45°28'5.05"N 20°12'39.58"E	1	919 m2
6.	Tisa Put	45°23'23.52"N 20°17'2.75"E	1	732 m2

Spatial disposition of locations are shown on Picture 1. Pictures 2-8 showing aerial photos of each location as well area disposition on each location. Areas are cleared of waste and need to be remediated.



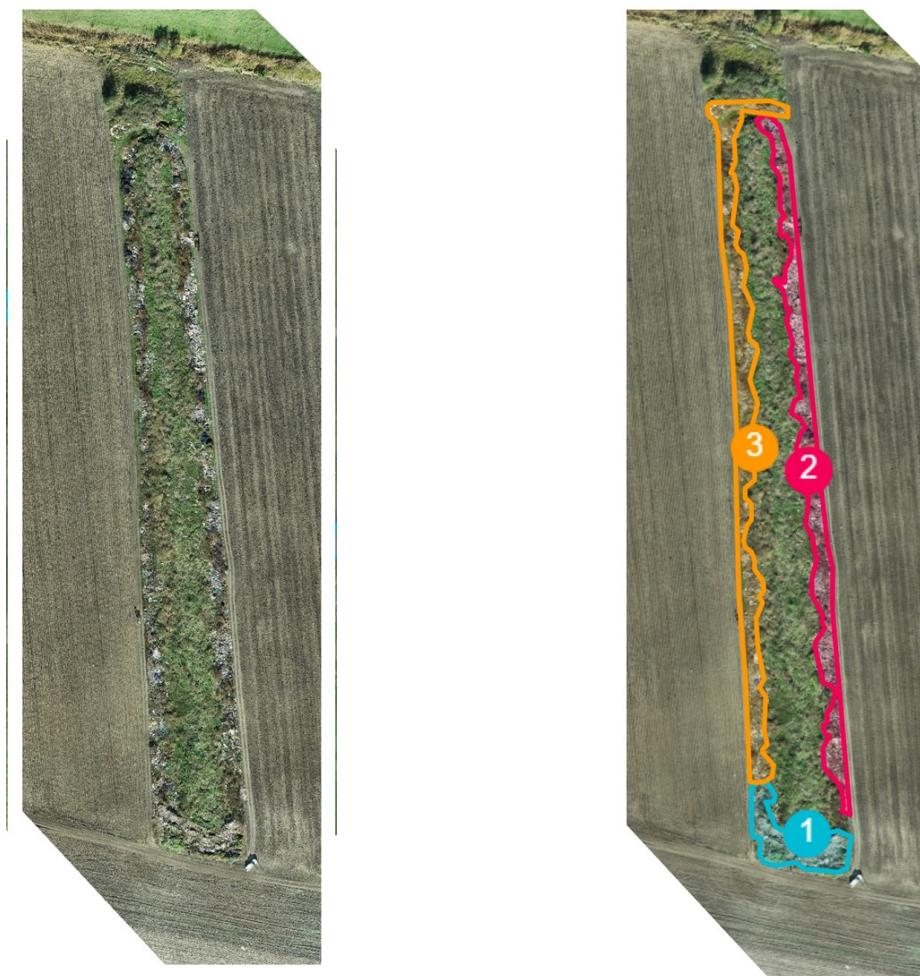
Picture 1. Spatial disposition of locations with areas covered with waste



Picture 2. Location Jankov most, aerial photo left and area disposition right



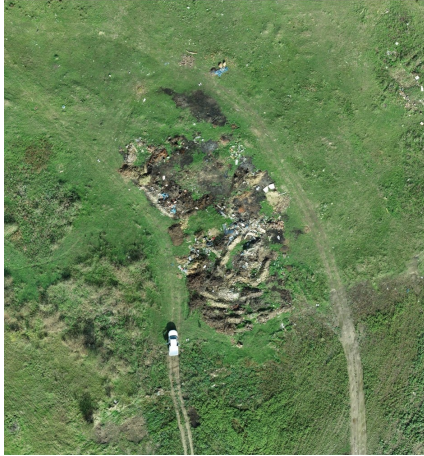
Picture 4. Location Muzja spic, aerial photo left and area disposition right



Picture 3. Location Mihajlovo, aerial photo left and area disposition right



Picture 5. Location Neimar, aerial photo left and area disposition right



Picture 6. Location Taras, aerial photo left and area disposition right



Picture 7. Location Tisa put, aerial photo left and area disposition right